

Optical Network Terminal (ONT) User Guide



Who are OFNL?

OFNL operates an 'Open Access' fibre optic network to new build residential and commercial developments across the UK.

OFNL uses Fibre to the Home (FTTH) to provide voice, ultrafast broadband and television services.

For more information or to find out which service providers operate on the OFNL network, [visit www.ofnl.co.uk](http://www.ofnl.co.uk) or call 02921 678 550.

Your fibre equipment

Installed within your property is an Optical Network Terminal (ONT) - this is where the fibre enters your home.

The ONT can connect to your router to provide you with broadband, and your telephone for voice services.

The colour, model and location of your ONT may vary.



Battery Backup Unit (BBU)

If you have a BBU installed, this will keep your ONT powered for up to 1 hour in the event of a power outage. This will allow you to continue to make and receive calls, including to the emergency services.




Always check your BBU is plugged in correctly and the lights are on. If the AC or OUTPUT lights are not glowing, call your internet service provider.

The lights on your ONT

Your ONT has several lights which identify its status. These lights can be useful to help you troubleshoot problems with your connection.

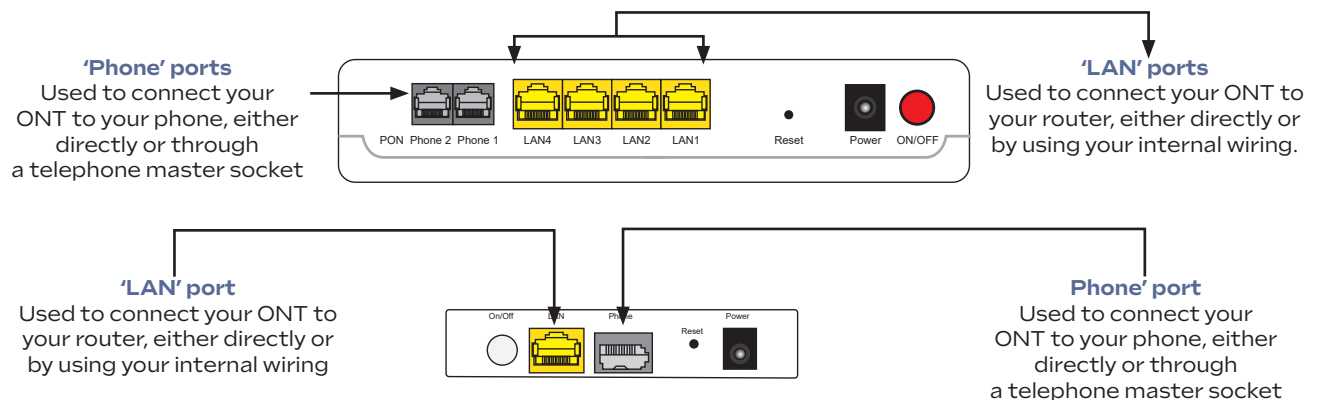
If your service is not working then please check the lights on your ONT. If there are no lights illuminated, please check the power connection. If you are still having problems, please call your internet service provider.

The ONT light names vary depending on the ONT model installed.

Type	Colour	State	Description
 LAN	Green	On	The LAN port is enabled and connected.
		Off	The LAN port is not connected. Check your cable between your router and the ONT.
 WAN	N/A	Off	Your ONT is not receiving a signal from the fibre network. Please contact your service provider.
	Green	Blinking	Your ONT is receiving a signal from the fibre network but there is a network problem. Please contact your service provider.
		Solid	Your ONT is working as expected and is receiving a signal from the fibre network.
 Phone	N/A	Off	Your phone line is disabled.
	Green	Blinking	Your phone line is enabled but there is a problem. Please contact your service provider.
		Solid	Your phone line is connected and working.
Device	Green	Blinking	Your ONT is powering on.

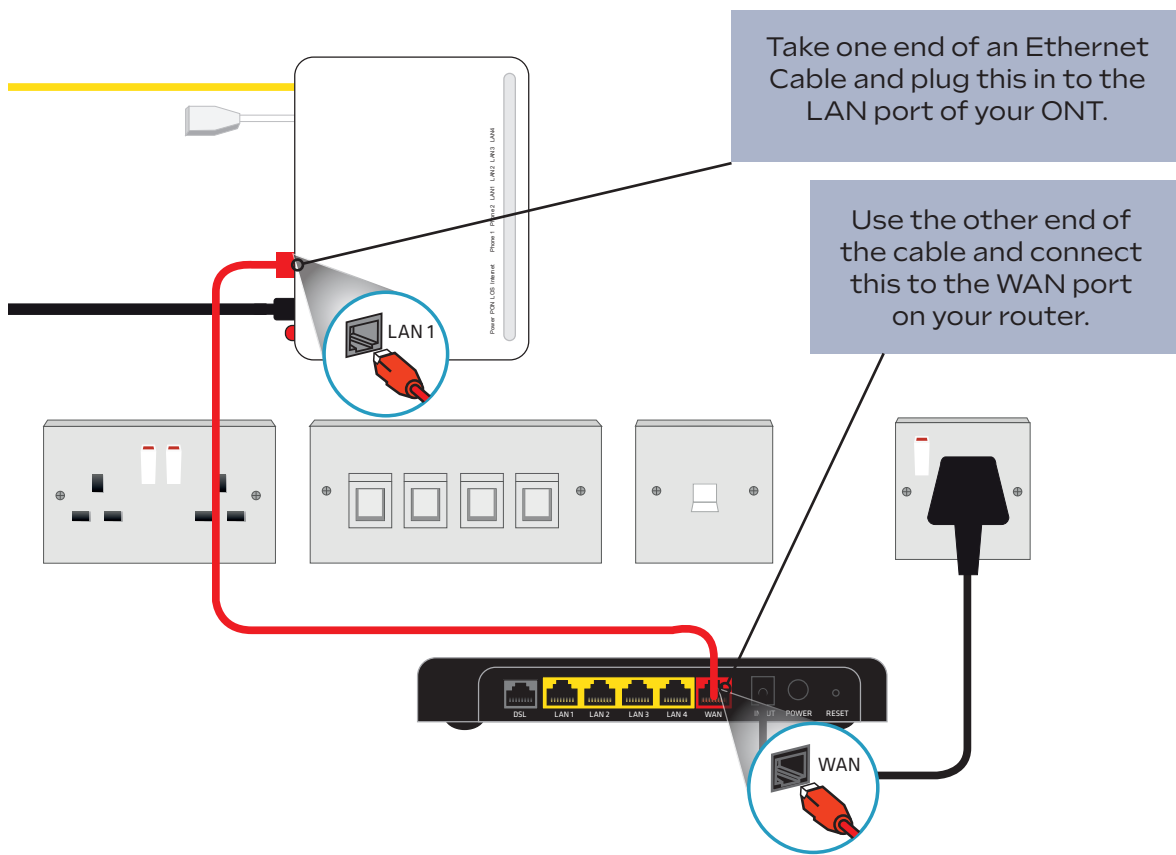
Ports you will find on your ONT

Below we show two basic ONT types, but layout and colour of ports will vary depending on your actual model.



Connecting your ONT to your router*

Direct connection from your ONT to your router



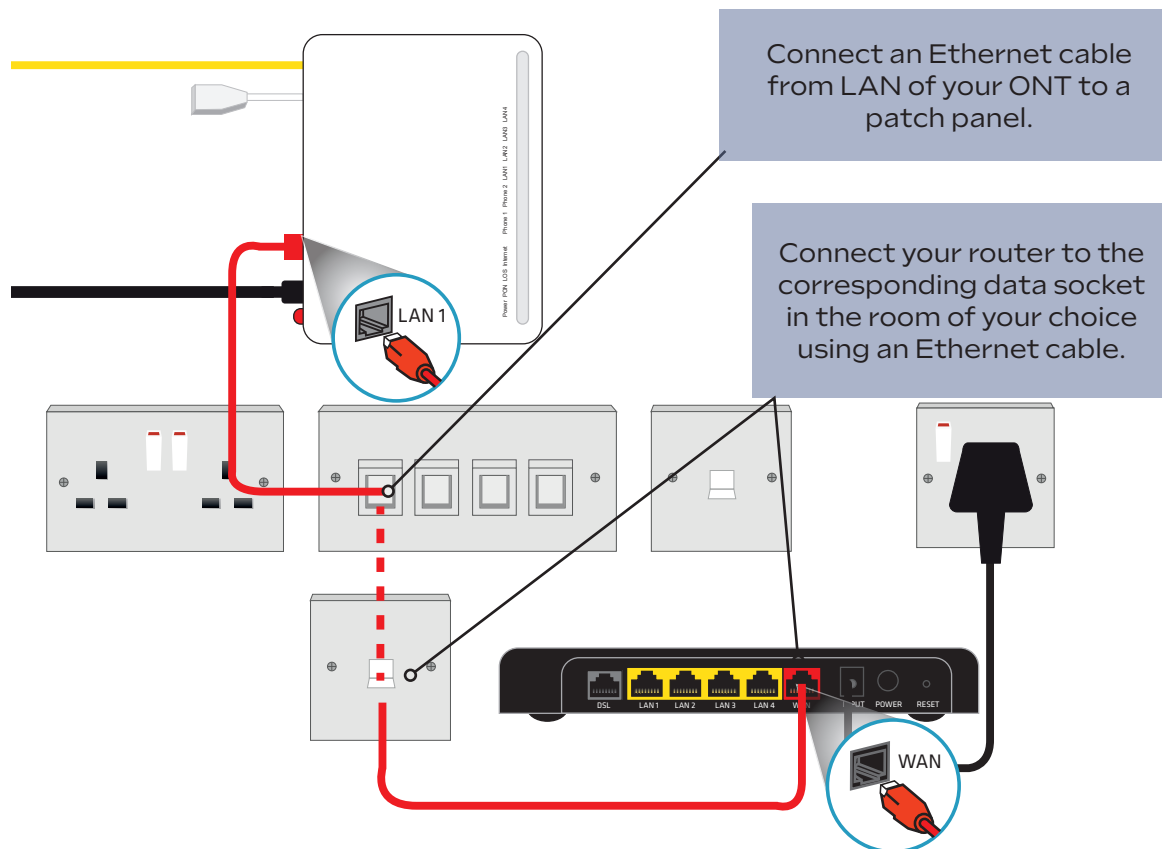
Watch our online video which explains how to connect the ONT to your devices. It also tells you what the ONT and Battery Backup Unit do, and what to do if they stop working.



*The router colour and model may vary depending on the service provider you choose

Connection from your ONT to your router using your internal wiring

If your property has internal wiring, you may be able to connect devices to the internet using this, or use it to relocate your router into a room of your choice.



Connection from your ONT to your phone using your internal wiring

