



Open Fibre Networks



**OFNL's
Ultrafast
full fibre is
waiting for you**

Who we are

Your developer has selected OFNL's future-proof fibre network for an ultrafast solution, delivering speeds of up to 1Gbps.

Experience full fibre, reliable broadband with fibre cables going all the way into your home.

Your whole household can stream, game, shop and browse at the same time.

You won't experience slow downs in connectivity or peak time congestion as we use the latest technology. As technology evolves, our networks will too.

OFNL continually invests in its networks and will deliver higher speeds in the future in line with market demand.





Our services

OFNL operates an open access, 100% fibre network, with a wide choice of Internet Providers to meet all your needs. OFNL supports a range of services including:



Ultrafast speeds of up to 1Gbps*

Endless entertainment with ultrafast, low latency broadband; perfect for all your internet needs



Voice services

Make and receive calls over our fibre network, either via the voice port on your ONT or on the router



TV services**

TV and entertainment services are delivered across our fibre network, serving all the properties on your development

*100Mbps is currently being deployed to the developments on OFNL's network. To find out the maximum speeds available in your area, use our postcode checker at www.ofnl.co.uk

**Only available on selected developments

Get online together - all at the same time

Our 1Gbps capable networks are fast enough for your whole household to get online, all at the same time.

- Stream high resolution and 4K videos
- Game online flawlessly
- Work from home reliably
- Watch UHD movies on multiple TVs, while downloading game updates and surfing the web
- Network online with friends and family
- Store photos, documents and music
- Video call with crystal quality
- Use catch-up services like BBC iPlayer, Netflix and Prime



Full fibre to the home



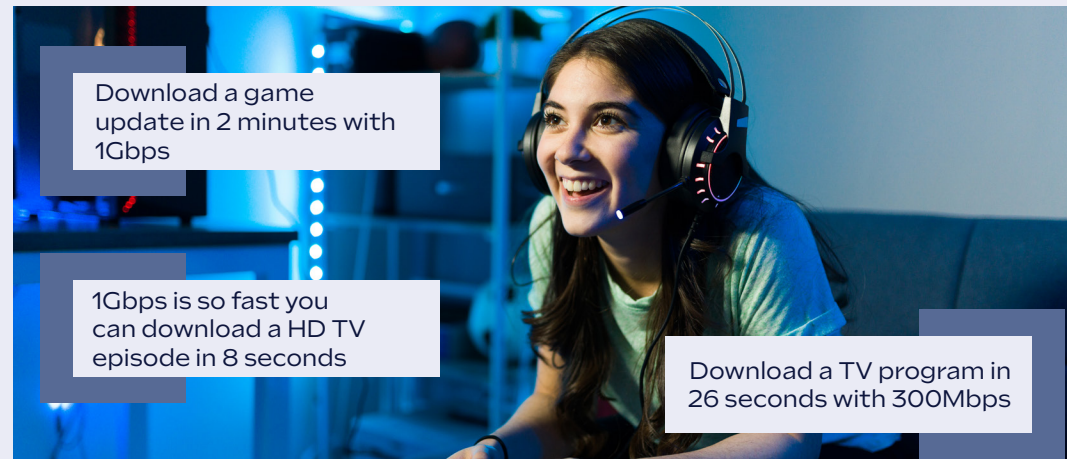
Stream multiple devices



Peak time browsing



Work from home reliably



Download a game update in 2 minutes with 1Gbps

1Gbps is so fast you can download a HD TV episode in 8 seconds

Download a TV program in 26 seconds with 300Mbps

Please note, download times are dependent on file size.

Getting started

OFNL operates an open access, 100% fibre network, with a wide choice of Internet Providers to meet all your needs.

01 Check your postcode

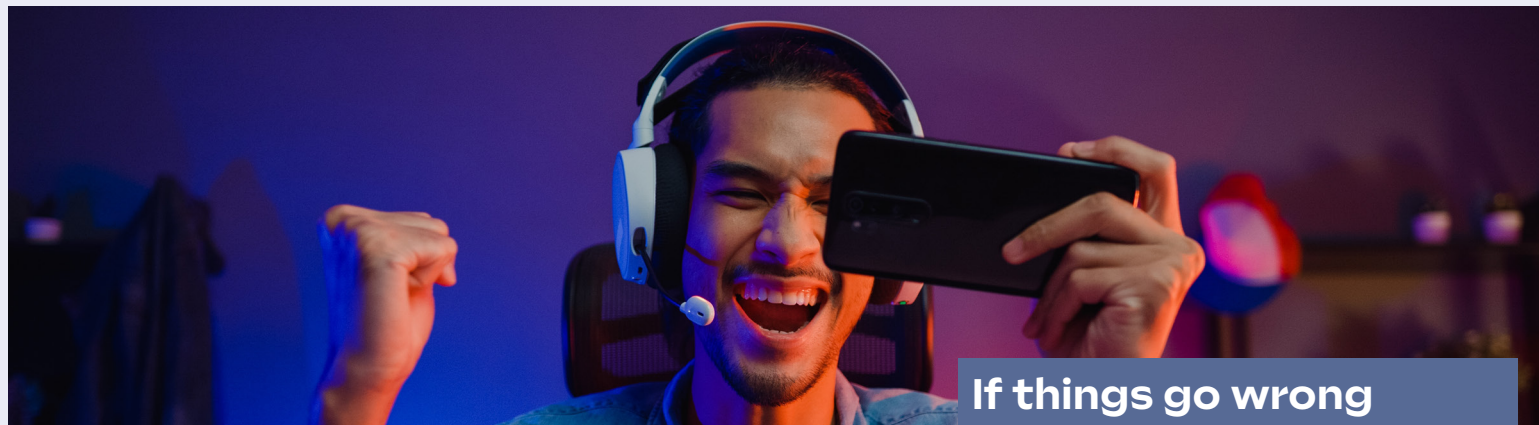
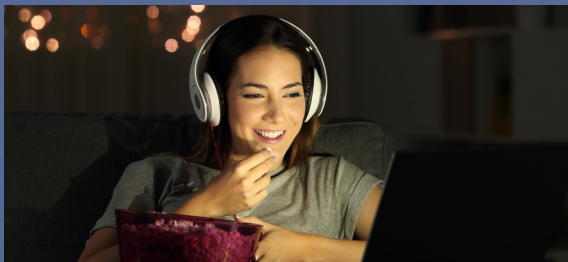
Use the OFNL website to find the available Internet Providers in your area and the maximum speeds achievable

02 Pick your provider

Order a service from an Internet Provider on the OFNL network, that offers the package and speed you want, either online or via the phone. Place your order before you move into your new home.

03 Get connected

If your Internet Provider sends you a router, simply plug the router into the ONT and follow the instructions they send you, for an instant broadband connection



If things go wrong

The WAN light on your ONT should be solid green and the LAN light should be flashing green. If this isn't the case, there could be a problem with your ONT and you should contact your Internet Provider. Here are some checks you can do first before contacting them:

Is your equipment switched on?

Check your ONT and router are plugged in and switched on

Is your phone line working?

If you have a phone line, check that you can make calls. If your line is crackly, or there is no dial tone, contact your service provider

Is your router connected properly?

Check the Ethernet cable is securely connected into the LAN port of your ONT and the WAN port of your router

Having wireless connection issues?

Connecting wirelessly will be slower than a wired one. Try moving your router into a central location, free of any obstructions and away from electric equipment, such as microwaves or baby monitors. Connect devices to the internet using your internal wiring (if installed), or use it to relocate the router into a central location

Having connection issues?

Turn your ONT and router off. Wait for 30 seconds and turn them back on



ofnl.co.uk

Use the postcode checker on our website to find out the internet service providers available to you.

You can also find out the maximum speeds achievable in your area.



For information on your OFNL equipment, watch our online animation video. You can also download our ONT user guide.

ofnl.co.uk/help-advice/your-equipment-explained/



Open Fibre Networks

Contact us

02921 678 550

ofnl.co.uk/contact-us/